

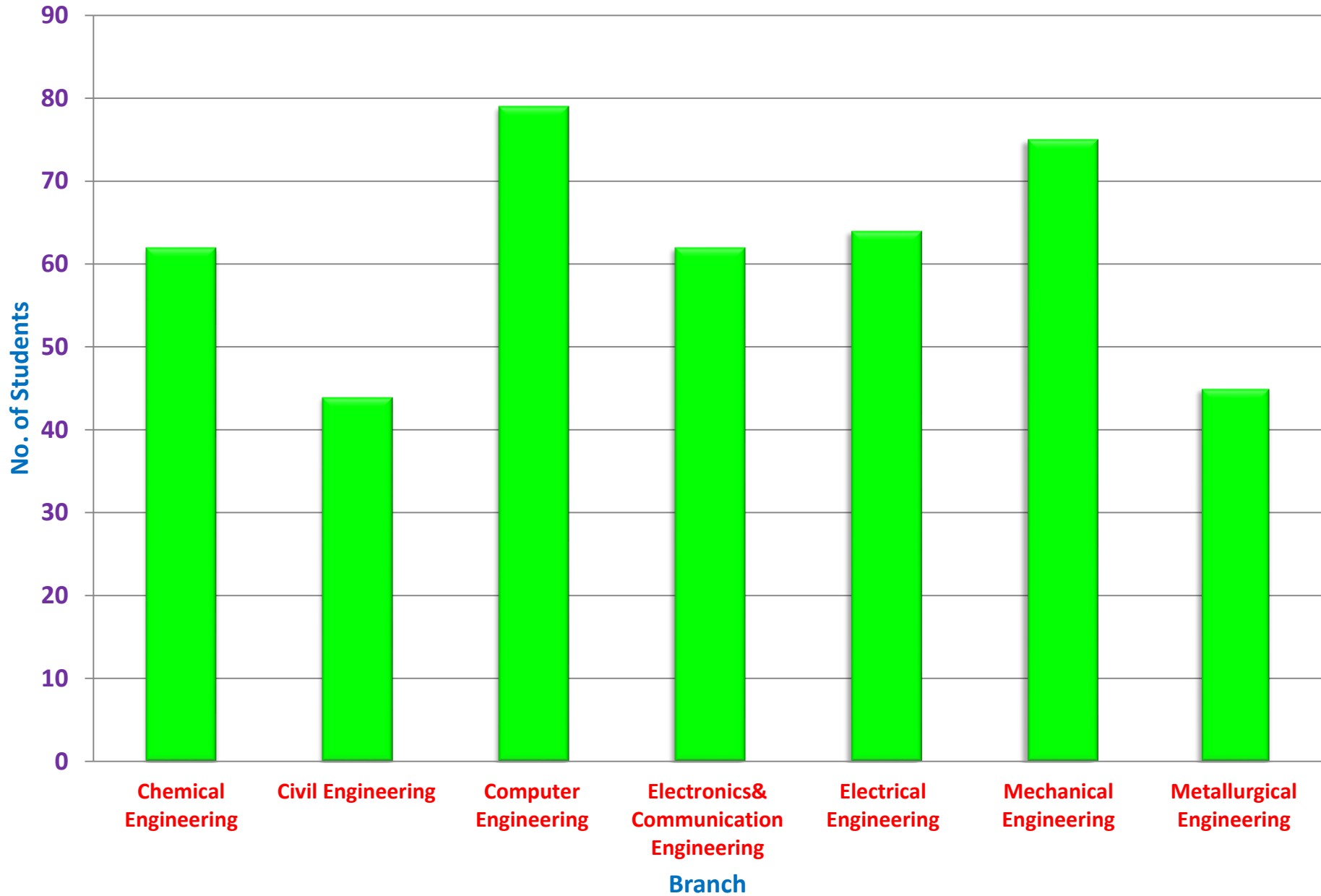


Placement Report 2017-18

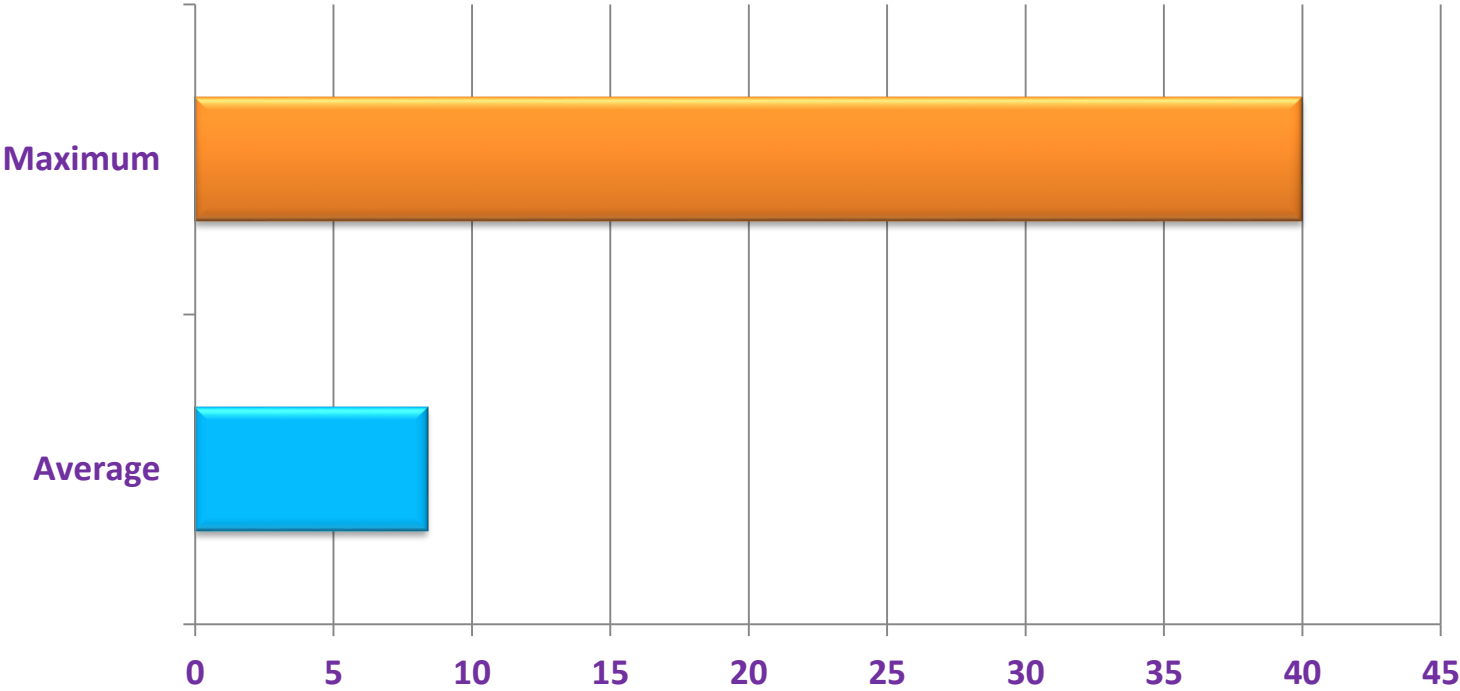
UG Placement Statistics

Total Placements		
Sr. No.	Branch	No. Of students
1	Chemical Engineering	62
2	Civil Engineering	44
3	Computer Engineering	79
4	Electronics& Communication Engineering	62
5	Electrical Engineering	64
6	Mechanical Engineering	75
7	Metallurgical Engineering	45
	Total	431

Total Placements

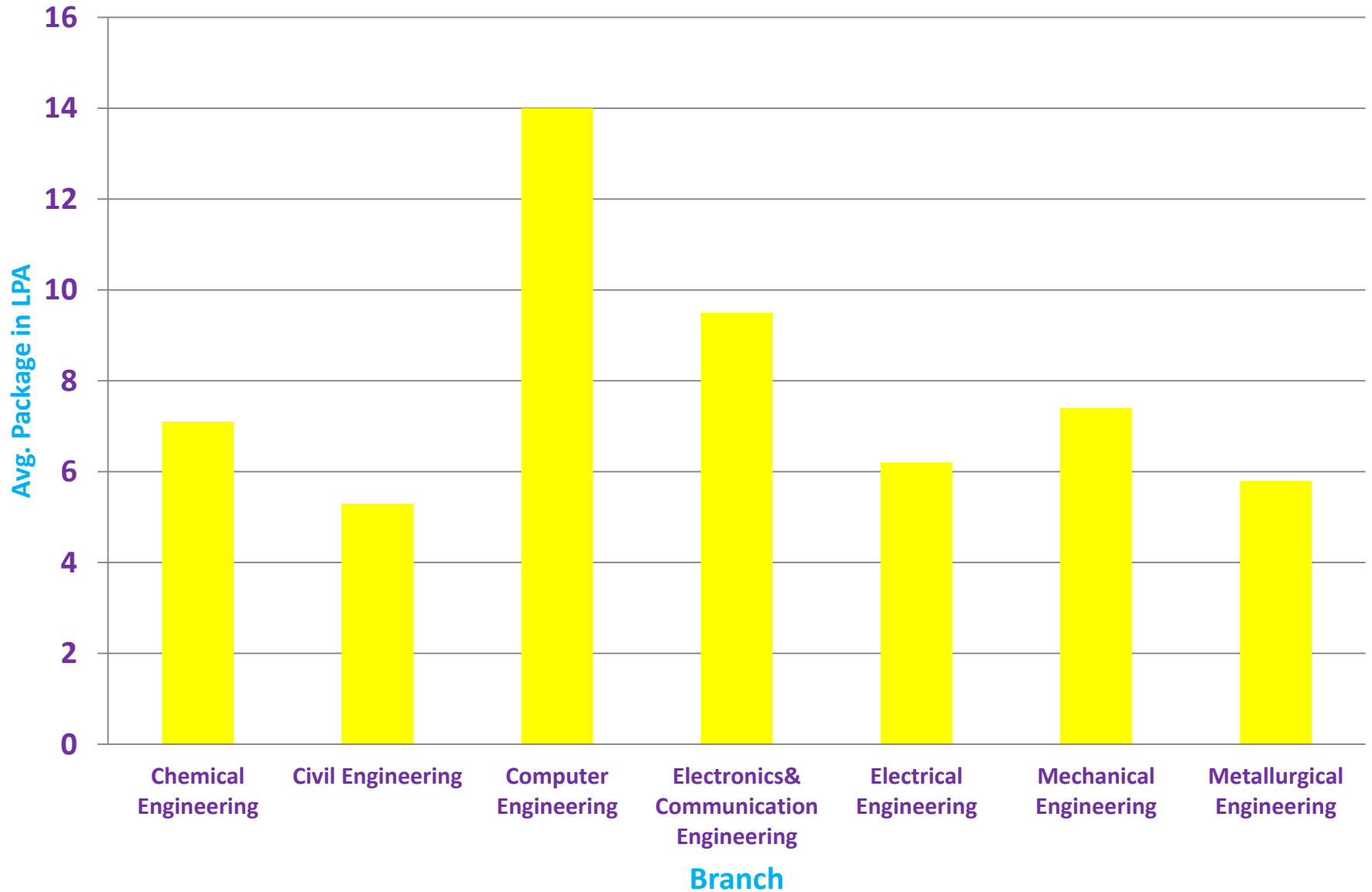


Total Package Details of UG(in LPA)	
Maximum	Average
40	8.4

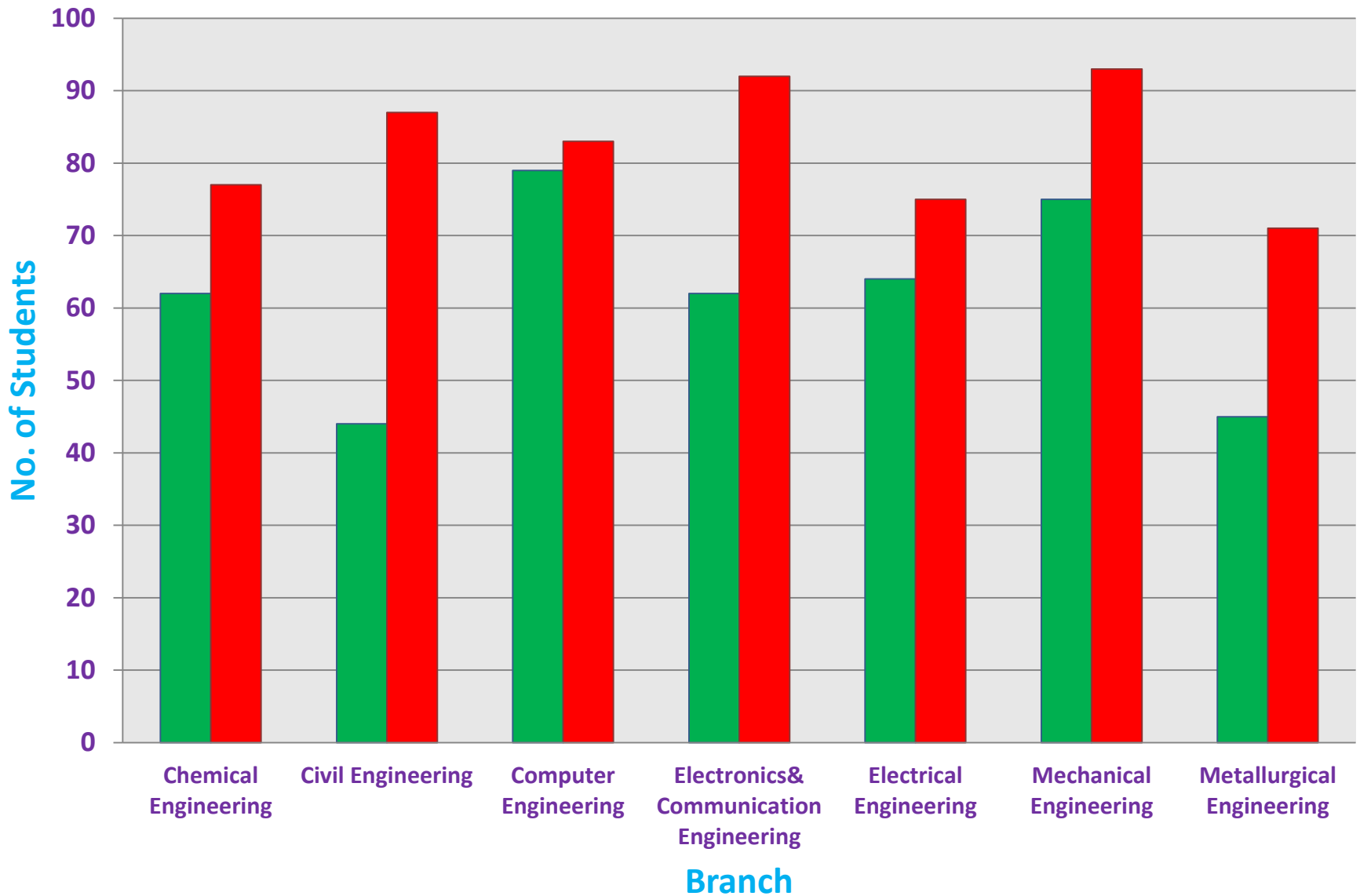


Branch	AVERAGE PACKAGE(LPA)	Students Placed	Total Offers	Total Eligible	Not Willing	% student Placed	HIGHEST PACKAGE (LPA)
Chemical Engineering	7.1	62	74	77	10	81	17.3
Civil Engineering	5.3	44	43	87	31	50.6	12.9
Computer Engineering	14.0	79	84	83	2	95	40.0
Electronics & Communication Engineering	9.5	62	63	92	17	68	32.0
Electrical Engineering	6.2	64	68	75	16	85	12.0
Mechanical Engineering	7.4	75	87	93	18	80.6	17.3
Metallurgical Engineering	5.8	45	49	71	18	63	12.9
Overall	8.4	431	468	578	118	74.7	40.0

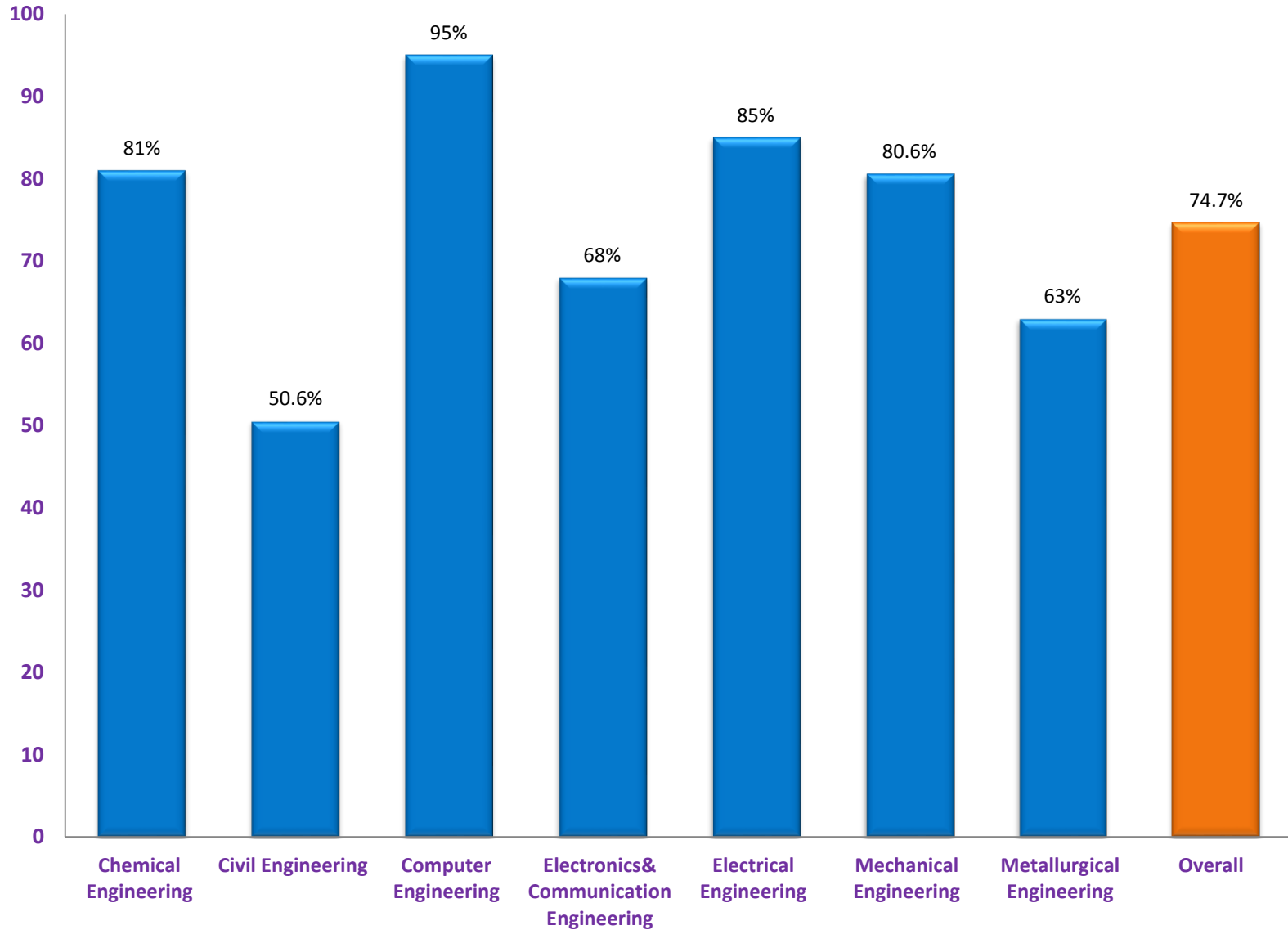
Average Package Branchwise (In LPA)



Students Placed vs Total Eligible Students



Branch wise Placed student in %



PG Placement Statistics

Total Placements

Sr.no.	Branch	No. of students
1	Mechanical Engineering	03
2	Civil Engineering	04
3	Computer Engineering	13
4	Electronics& Communication Engineering	09
5	Electrical Engineering	04
6	Centre For Energy And Environment	04
7	National Centre For Disaster Mitigation & Management	02
8	M.Sc	13
9	M.B.A	16
	TOTAL	68

Total Package Details (UG+PG) in LPA

Total Package Details (UG +PG)(in LPA)	
Maximum	Average
40	8.1